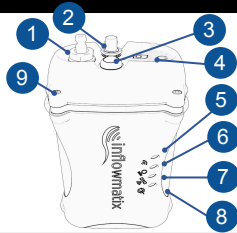




Resilient, Adaptive and Steady-State Water Supply Networks

QUICK START GUIDE

InflowSense™ Features



1	Pressure port
2	Aerial connector
3	Commission button
4	SIM and Power cover
5	Communication LED
6	Pressure LED
7	GPS LED
8	System LED
9	Case screws
10	Zip tie loop
11	GPS stand



3. Commission - Step 2

4. After 5s System LED will go **Blue**.
5. GPS LED will go **White** while obtaining fix then **Blue** when done.
6. Pressure LED will go **White** to tare atmospheric, then **Blue** when done.
7. Communications LED will go **White** while connecting, then **Blue** when uploading.
8. System LED will flash **Blue** to show data is being written to memory
9. Now connect pressure hose to pressure port.

Device is ready to deploy.

4. Decommission Device

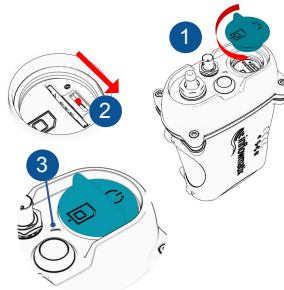


1. Lay device on GPS stand, GPS icon pointing to the sky.
2. Press and hold commission button for 5s then release.
3. All LEDs will go **White** to indicate entering decommission then off
4. GPS LED will go **White** while obtaining fix then **Blue** when done.

Once complete all LEDs will turn **White** and then **OFF**

1. Power on

1. Loosen and remove SIM cover.
2. Using a pen gently slide switch ON.
3. Tighten SIM cover to mark on cap.



All four LEDs will go **White** for five seconds and turn **OFF**.

2. Commission - Step 1

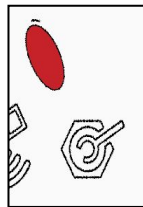


1. Lay device on GPS stand as shown, GPS icon pointing to the sky.
2. Before powering on, ensure pressure hose is **not** connected.
3. Press and hold commission button for 5s then release.

All LEDs will go **Blue** to indicate entering commission mode.

5. Errors

If at any point the device is unable to perform the key functions the corresponding LED will show **Red**.



Please contact Inflowmatix on
07821 481386
for help with diagnosis

6. Safety Warnings

Pressure Port

DO NOT exceed 35 bar pressure input.

Handling

The device is robust but handle with care to avoid unnecessary damage.

The device contains Lithium Thionyl Chloride batteries and should only be serviced by authorised personnel.



ADDITIONAL INFORMATION



If this equipment is used in a manner not specified by the manufacturer, the protection provided by the equipment may be impaired

Instructions on cleaning and decontamination

To keep equipment clean, please wash under a cold water tap with mild detergent. Please do not use any solvents such as white spirits or bleach

This equipment is designed to work outside in wet conditions.

This equipment is used to monitor water pressure. The information is transmitted using 2G/3G data.

Address:

Inflowmatix limited
1 Venture Road
Southampton Science park, Hampshire
SO167NP

Frequency bands and the output power.

Gsm 900	+33dBm
Gsm 1800	+30dBm
FDD I	+24dBm
FDD VIII	+24dBm

GSM Modem	3G/2G operation, SIM contract, external high efficiency antenna
GPS	High accuracy time synchronisation and position location
Pressure Range	0 - 20 bar
Total Accuracy	0.1% FS
Battery Pack	Internal 7.2V, 38AH Lithium Thionyl Chloride (non rechargeable)
IP68 Rated	Yes
Environmental	Storage: -40°C to +85°C Operational: -10°C to +50°C, 85% humidity